



MICRO SWITCH

FREEPORT, ILLINOIS, U.S.A.
A DIVISION OF HONEYWELL

FED. MFG. CODE 91820

SWITCH - BASIC

CATALOG LISTING

BZ-2RN-A2

FORMTEK
FO-90378

DRAWN
W L K 7 APR 64

CHECK
DAW 15 APR 64

ISSUE
6

DRAWING NUMBER
M BZ-2RN-A2

PAGE 1 OF 1

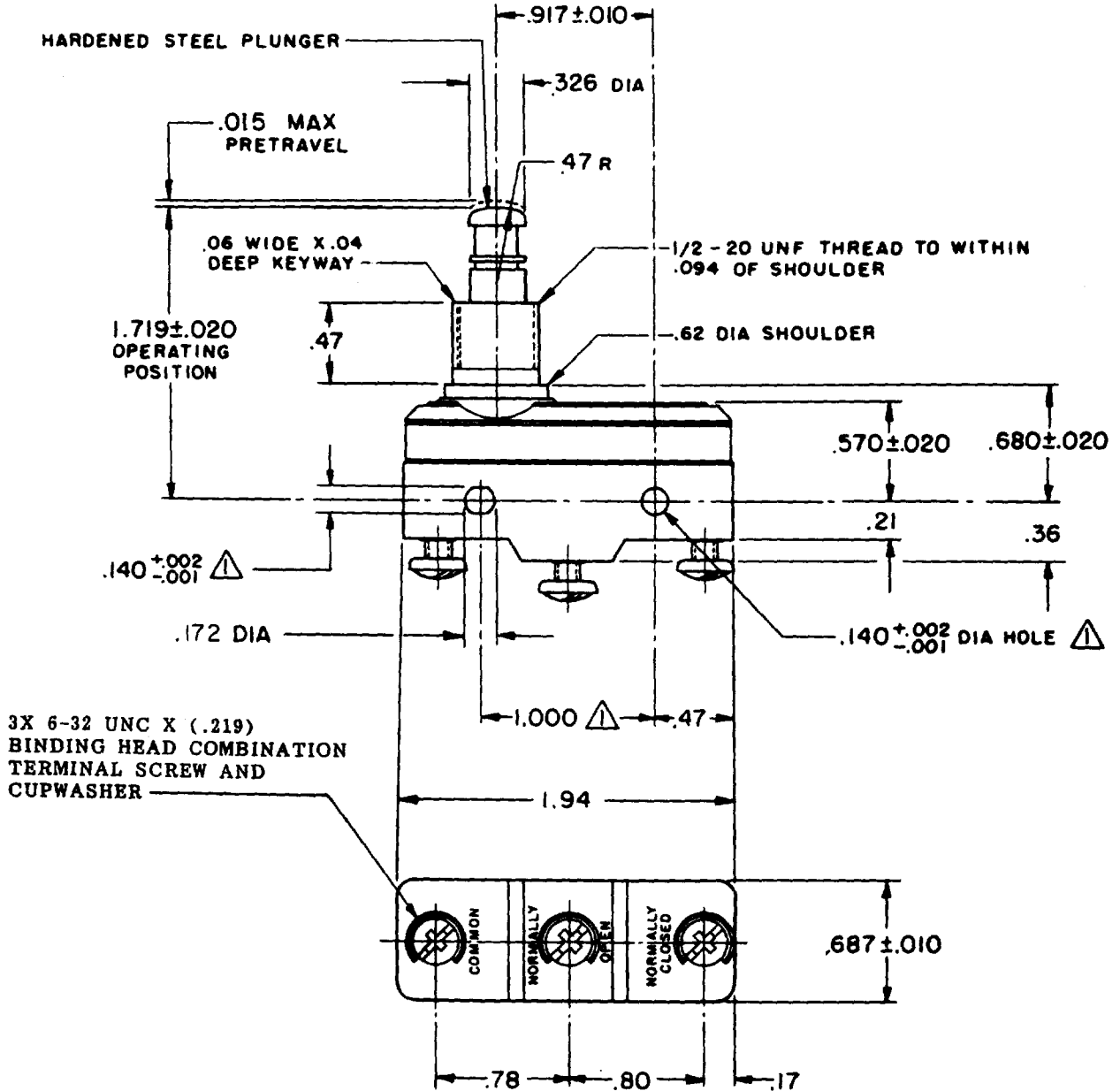
REPLACES

RELEASE NO.

CHECK

REVISIONS

A	CO	17410
	W L K	7 APR 64
B	CO	73287-J
	J A L	22 NOV 83
C	CO	77589
	J A L	30 MAR 94
D	CO	093346
	DLT	10 SEP 98



NOTE
 (triangle symbol) - MOUNTING HOLES WILL ACCEPT PINS OR SCREWS OF .139 MAX DIA ON 1.000 ± .002 CENTERS

THIS DRAWING COVERS A PROPRIETARY ITEM AND IS THE PROPERTY OF MICRO SWITCH, A DIVISION OF MINNEAPOLIS-HONEYWELL REGULATOR CO. THIS DRAWING IS NOT TO BE COPIED OR USED WITHOUT THE APPROVAL OF MICRO SWITCH.

CHARACTERISTICS	ELECTRICAL DATA	SCALE FULL
OPERATING FORCE ----- 9-13 OZ	CONTACT ARRANGEMENT S P D T	DO NOT SCALE PRINT
RELEASE FORCE ----- 4 OZ MIN	UNDERWRITERS' LAB. INC. LISTED RATINGS -L96- 1/2 A-125 VDC, OR 480 VAC 1/2 A-125 VDC; 1/4 A-250 VDC 1/8 HP-125 VAC, 1/4 HP-250 VAC	UNLESS OTHERWISE NOTED DIMENSIONS ARE IN INCHES TOLERANCES ARE:
DIFFERENTIAL TRAVEL ----- .0004-.0020	-L288-	ONE PLACE (.6) ±.030 TWO PLACE (.00) ±.015 THREE PLACE (.000) ±.005 ANGLES 1/4°.005
OVERTRAVEL ----- .219 MIN	-L299- -L306- 16A 250V ~ T85 5E4	WEIGHT .120 LB